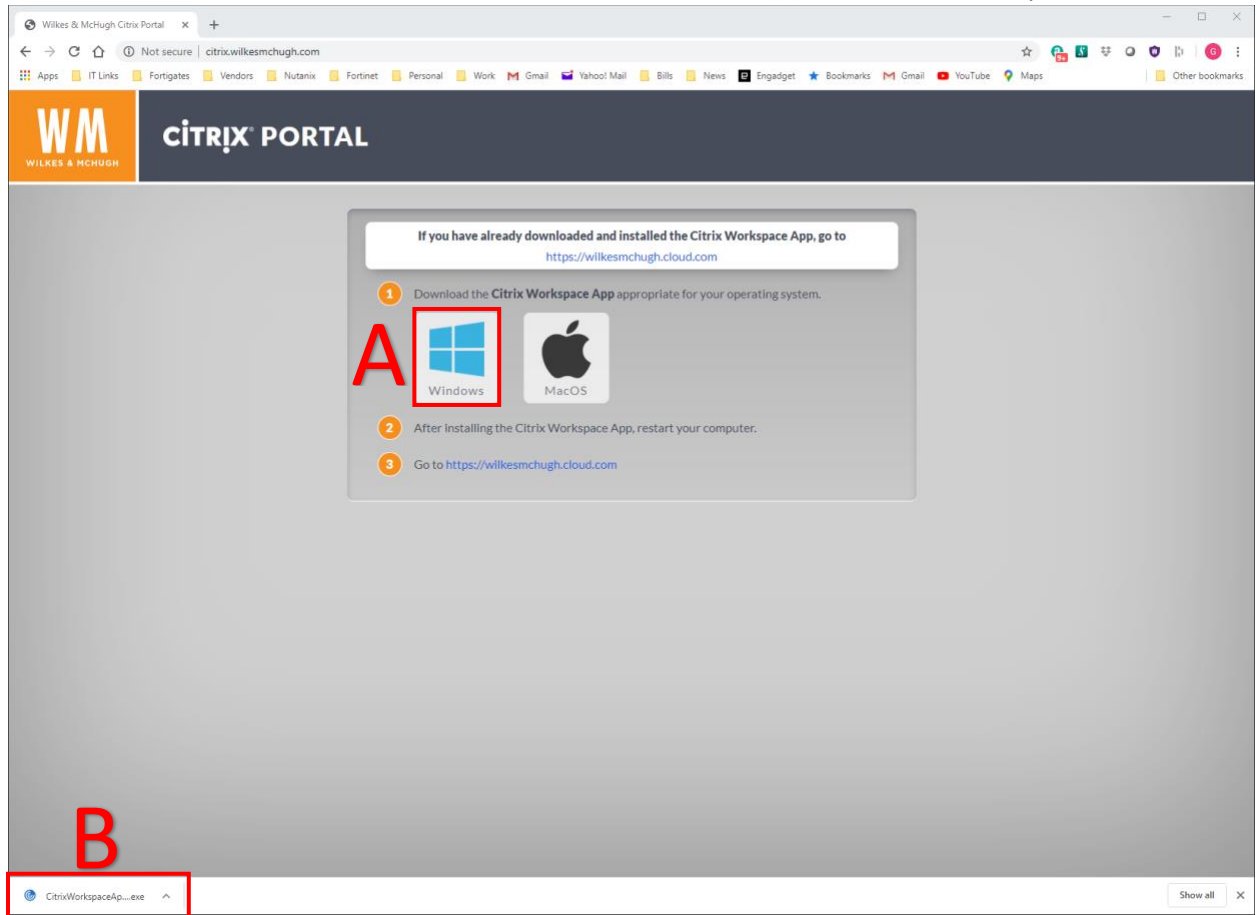
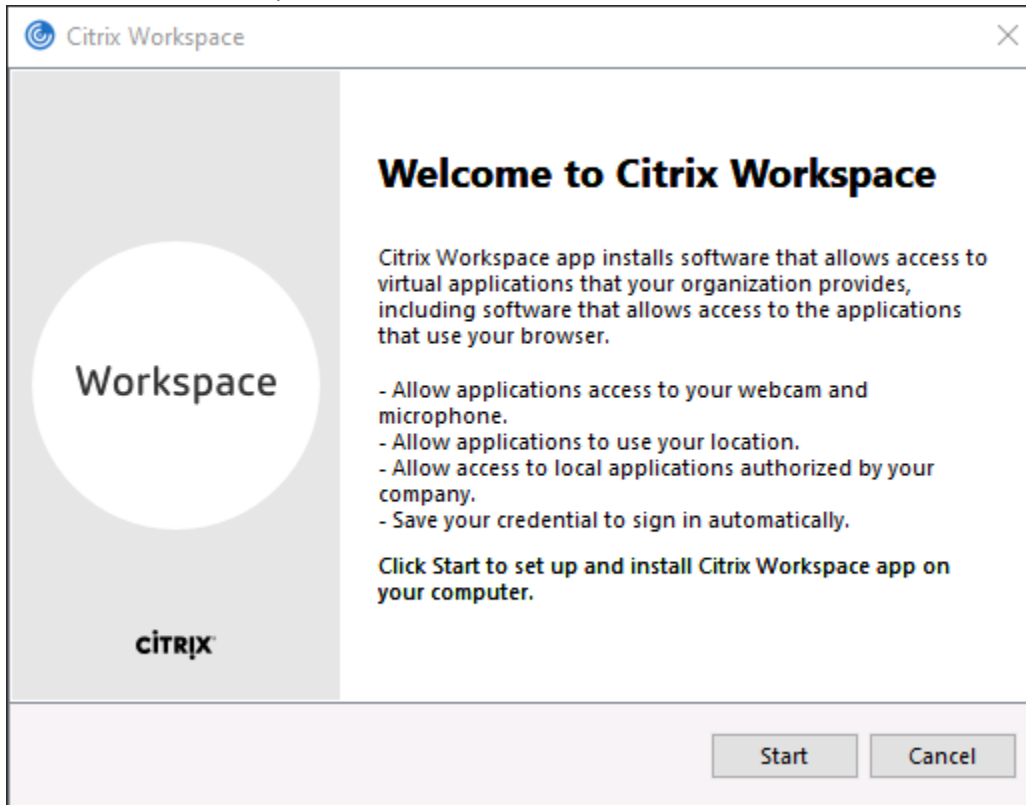


WM Citrix Download and Install Instructions

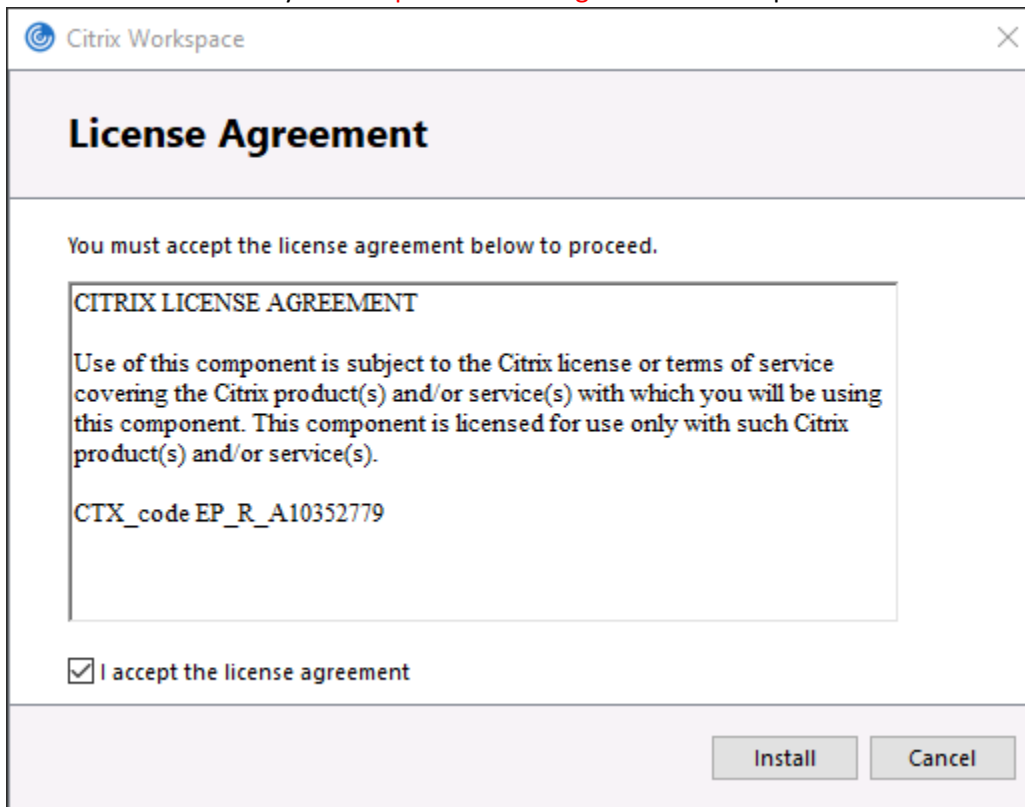
1. Open your web browser and go to <http://citrix.wilkesmchugh.com>
 - a) Click on the Windows icon (A) to download the Citrix Workspace App Client
 - b) After it has downloaded, click on the icon in the download area (B) to start the install process



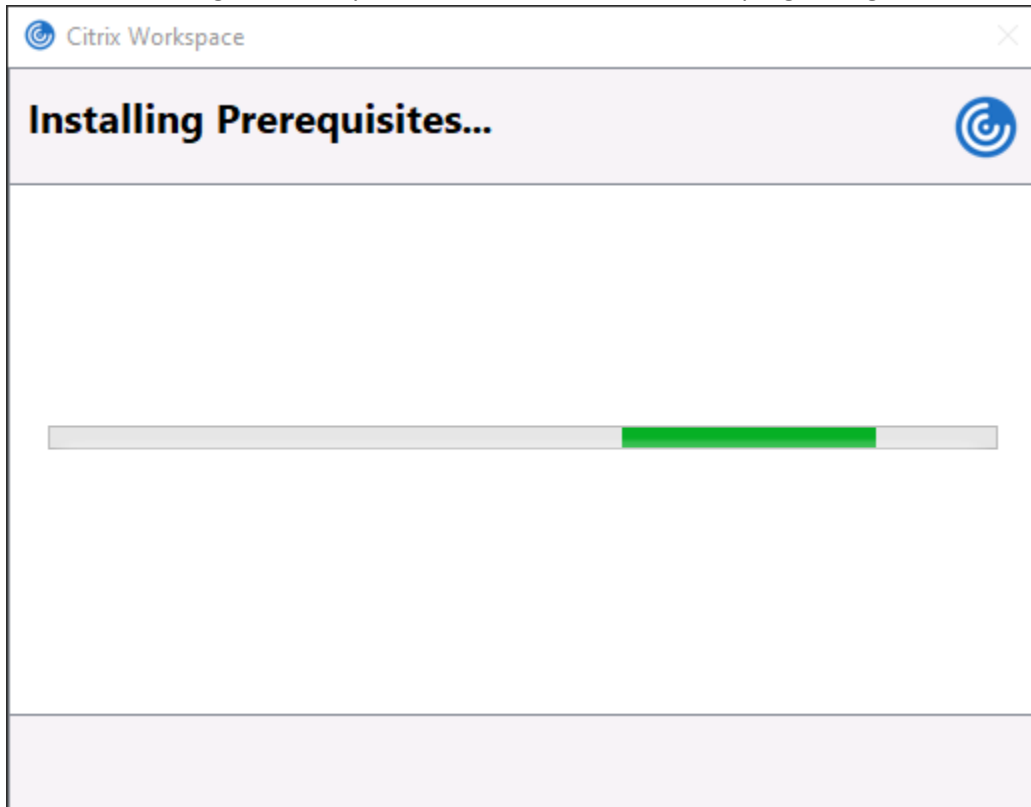
2. When the Citrix Workspace Installer starts, click on the "Start" button.



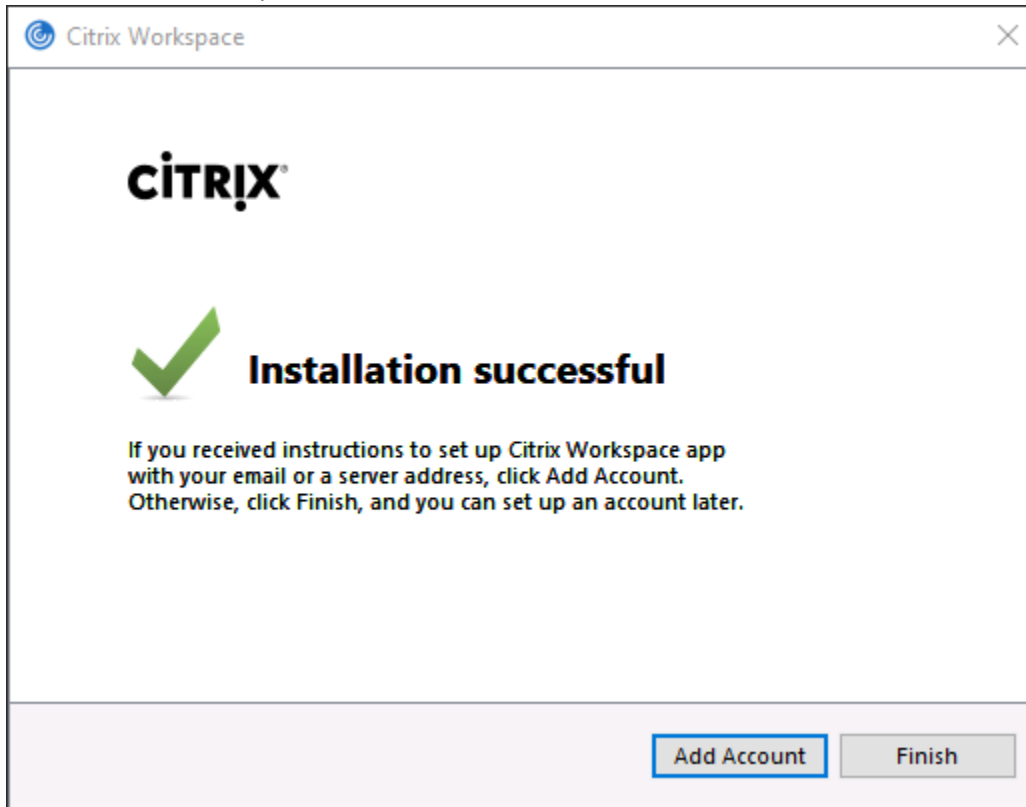
3. Click on the box that says "I accept the license agreement" then press the "Install" button



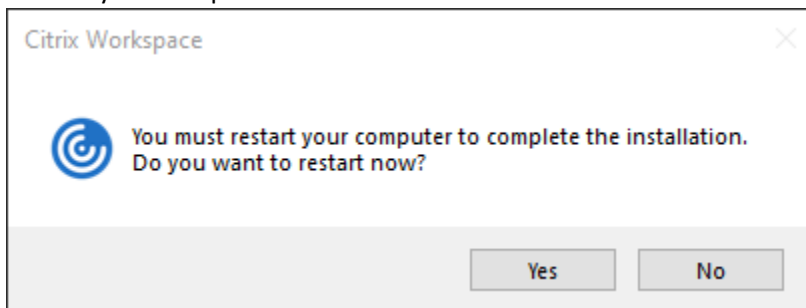
4. The install will begin. You may see a screen like this while it is progressing.



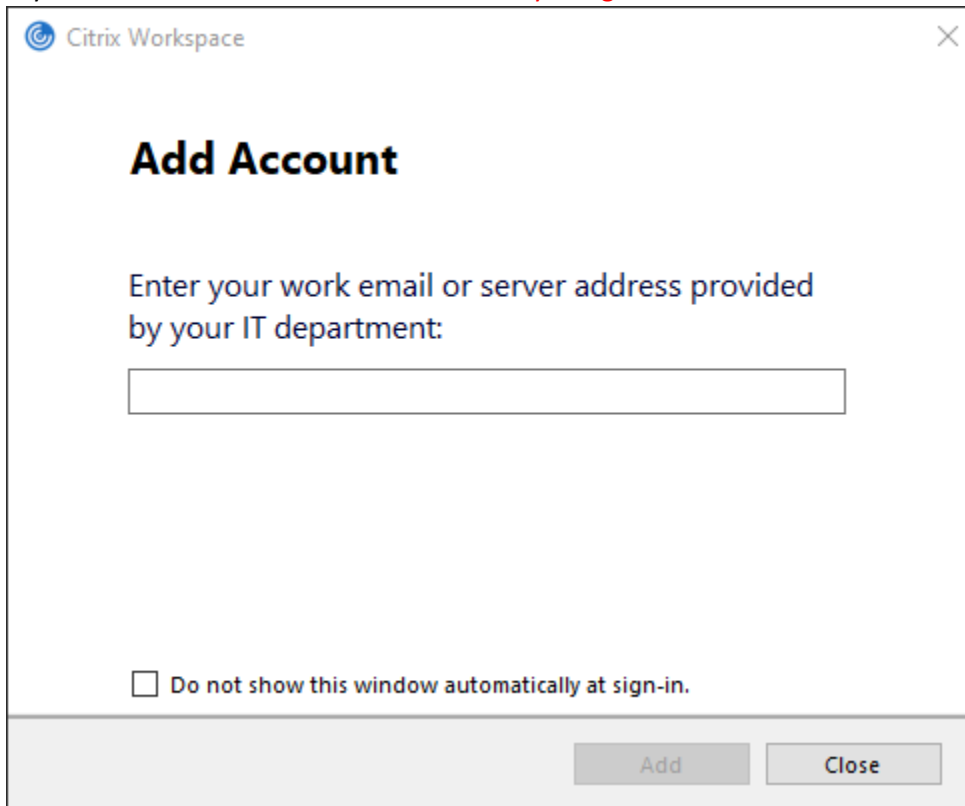
5. When the install completes, Click on the "Finish" button.



6. Restart your computer



7. When your computer restarts, you will probably get the following message box. Check the box that says **“Do not show this window automatically at sign-in”** then click **“Close”**.



The image shows a dialog box titled "Citrix Workspace" with a close button (X) in the top right corner. The main heading is "Add Account". Below the heading, there is a prompt: "Enter your work email or server address provided by your IT department:" followed by a text input field. At the bottom left, there is a checkbox with the label "Do not show this window automatically at sign-in.". At the bottom right, there are two buttons: "Add" and "Close".

Citrix Workspace

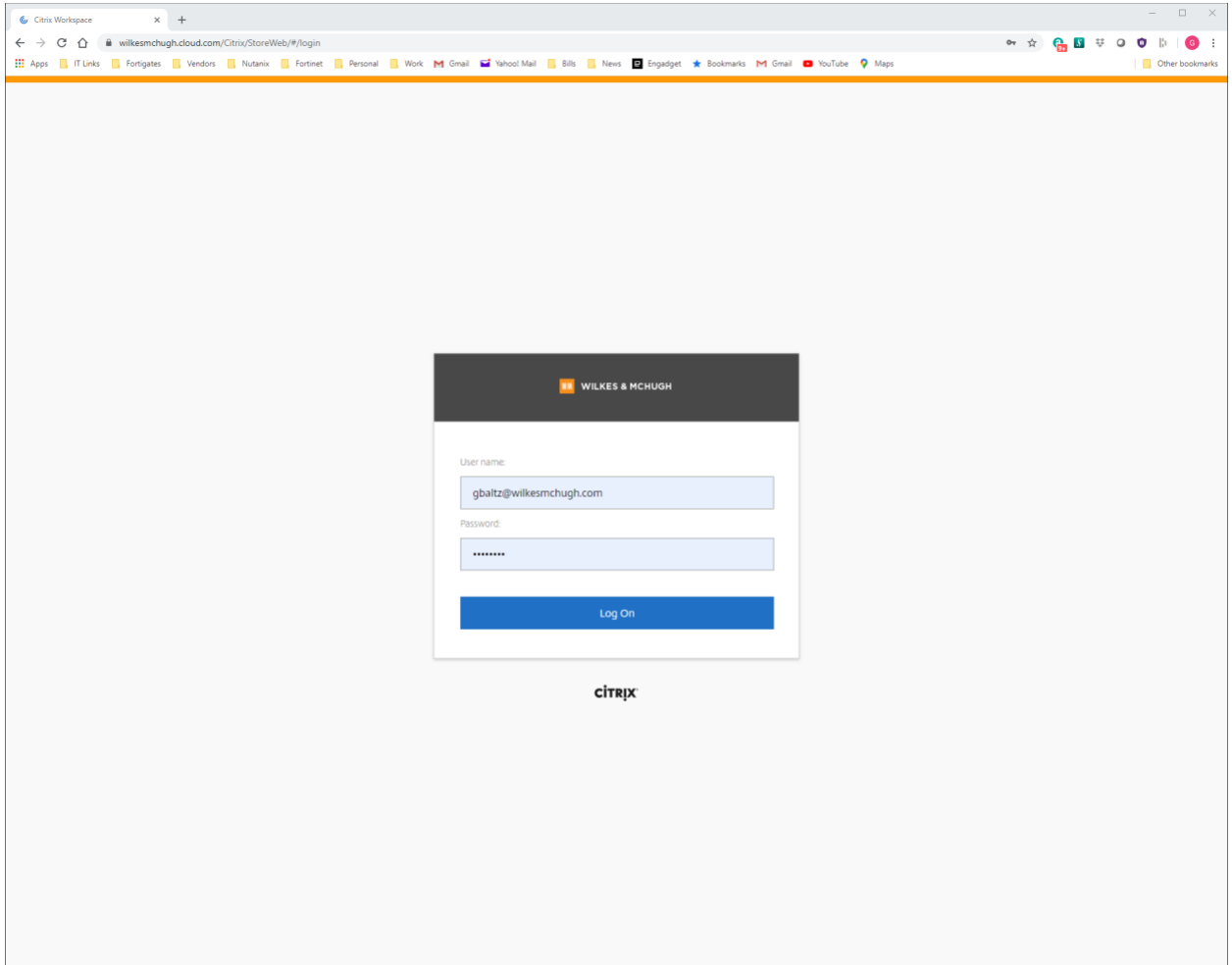
Add Account

Enter your work email or server address provided by your IT department:

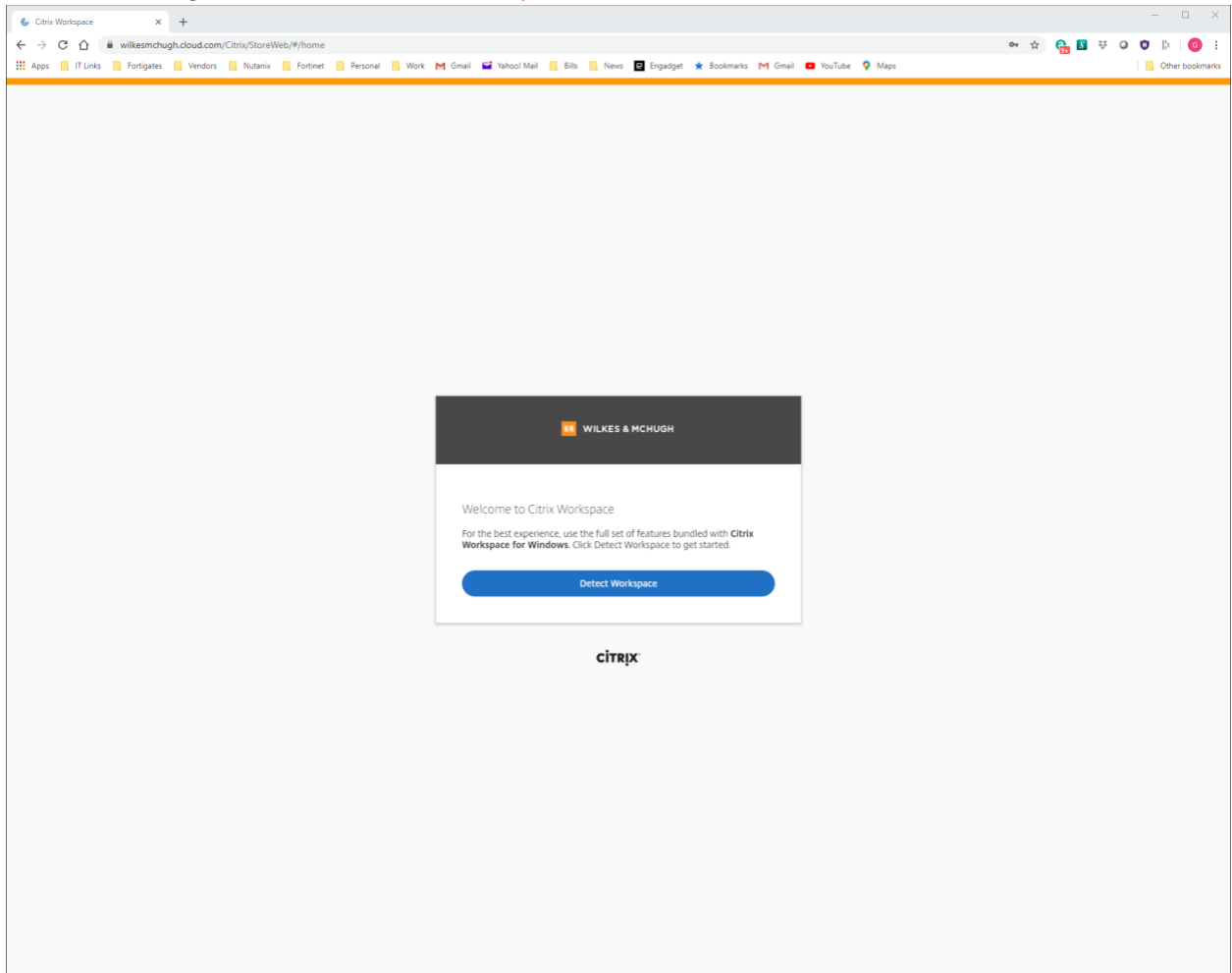
Do not show this window automatically at sign-in.

Add Close

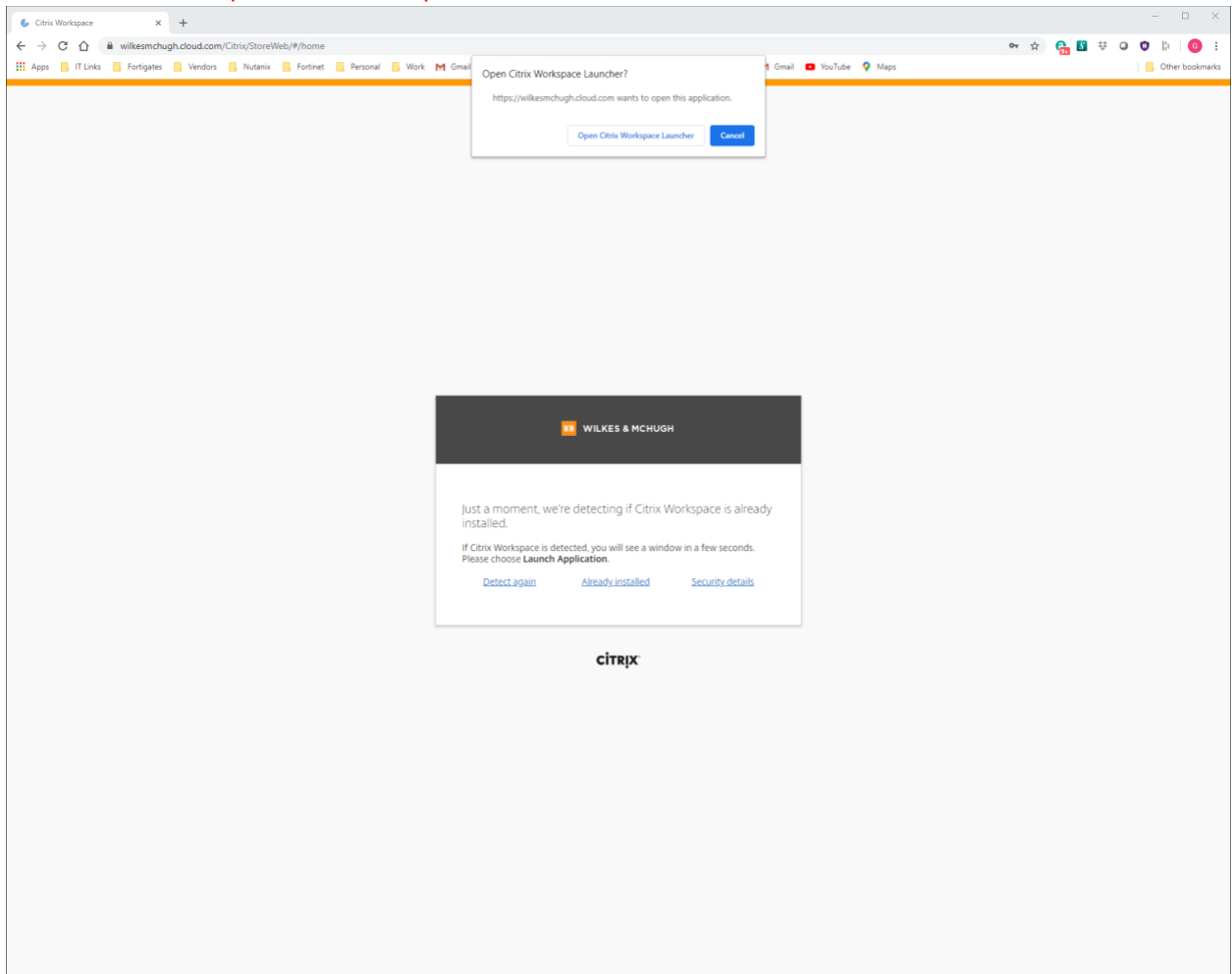
8. Go to <https://wilkesmchugh.cloud.com> in your web browser.
 - a) Enter your email address in the “Username” box.
 - b) Enter your network password in the password box.
 - c) Click “Log On”



9. On the following screen click **“Detect Workspace”** button



10. Click on "Already Installed". You will get a pop-up box asking "Open Citrix Workspace Launcher?" Click the button "Open Citrix Workspace Launcher"



11. You are now logged in to Citrix. Click on **“Apps”**, then **“All Apps”** on the left-hand side. This will show you all of the apps that are available to use. When you click on an app, you will get the pop-up box asking about opening the Citrix Workspace Launcher. Click on the **“Open Citrix Workspace Launcher”** button.

